

## GREEN SPACE IN THE NETHERLANDS

<b>Spatial scale / resolution:</b>	10 x 10 meters
<b>Spatial coverage:</b>	Netherlands
<b>Temporal range:</b>	2017 (publication date)
<b>Data source input data:</b>	<a href="https://www.atlasleefomgeving.nl/kaarten">https://www.atlasleefomgeving.nl/kaarten</a>
<b>Data format input data:</b>	GeoTiff (*.tif)
<b>Data format output data:</b>	GeoTiff (*.tif)
<b>Data storage output data:</b>	..\Source_data\Greenspace
<b>Files:</b>	rivm_20170415_g_groenkaart_10m.tif

### Data description

The “Groenkaart van Nederland” dataset shows all green space in the Netherlands in a raster map with a resolution of 10 x 10 meter, offered by the Institute for Public Health and Environment (Rijksinstituut voor Volksgezondheid en Milieu, RIVM). It combines the tree datasets (“Bomen in Nederland”), shrub dataset (“Struiken in Nederland”) and the low vegetation (“Lage vegetatie in Nederland”) including the low vegetation in agrarian areas. The RIVM offers all datasets separately as well.

The green is presented in a 10x10 meter resolution raster map, expressed as percentage green per grid cell. This dataset is derived from the AHN2 and AHN3 files (“Actueel Hoogtebestand Nederland”, resolution of 0.5 m), the BAG buildings (“Basisregistratie Adressen en Gebouwen”) and the Infrared aerial photo (CIR file, resolution of 0.25 m). The dataset can be viewed in <https://www.atlasleefomgeving.nl/kaarten> and downloaded as GeoTiff file.

For more information visit: <https://www.atlasleefomgeving.nl/en/explore/nature/green-living-environment>

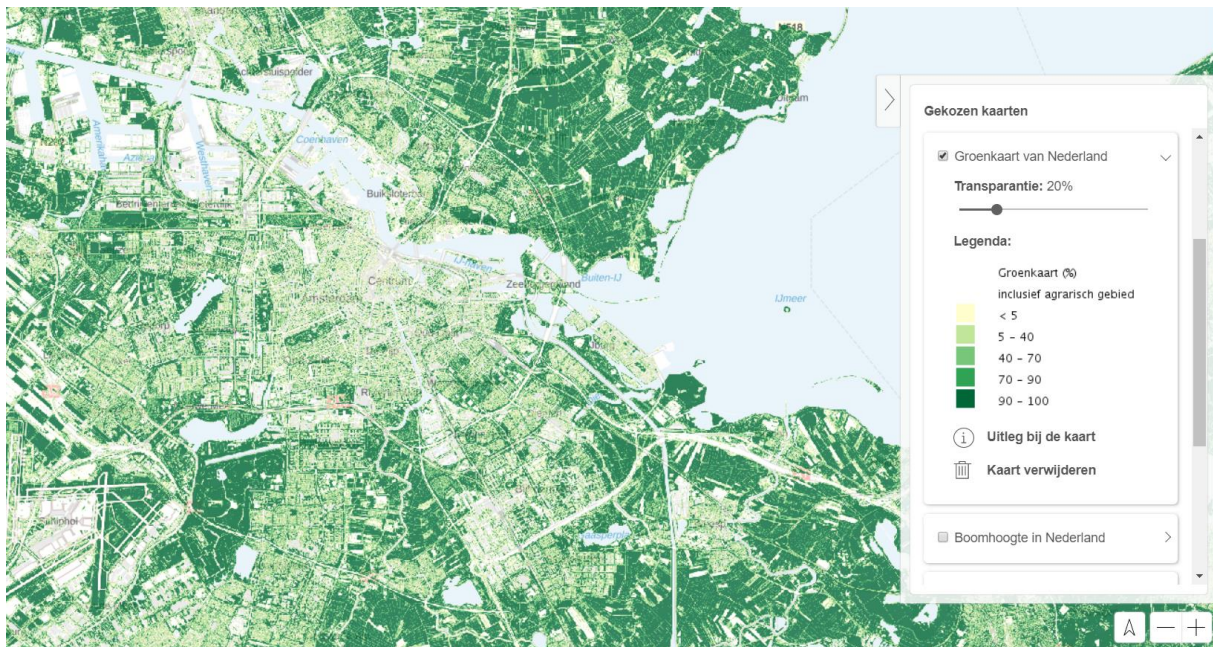
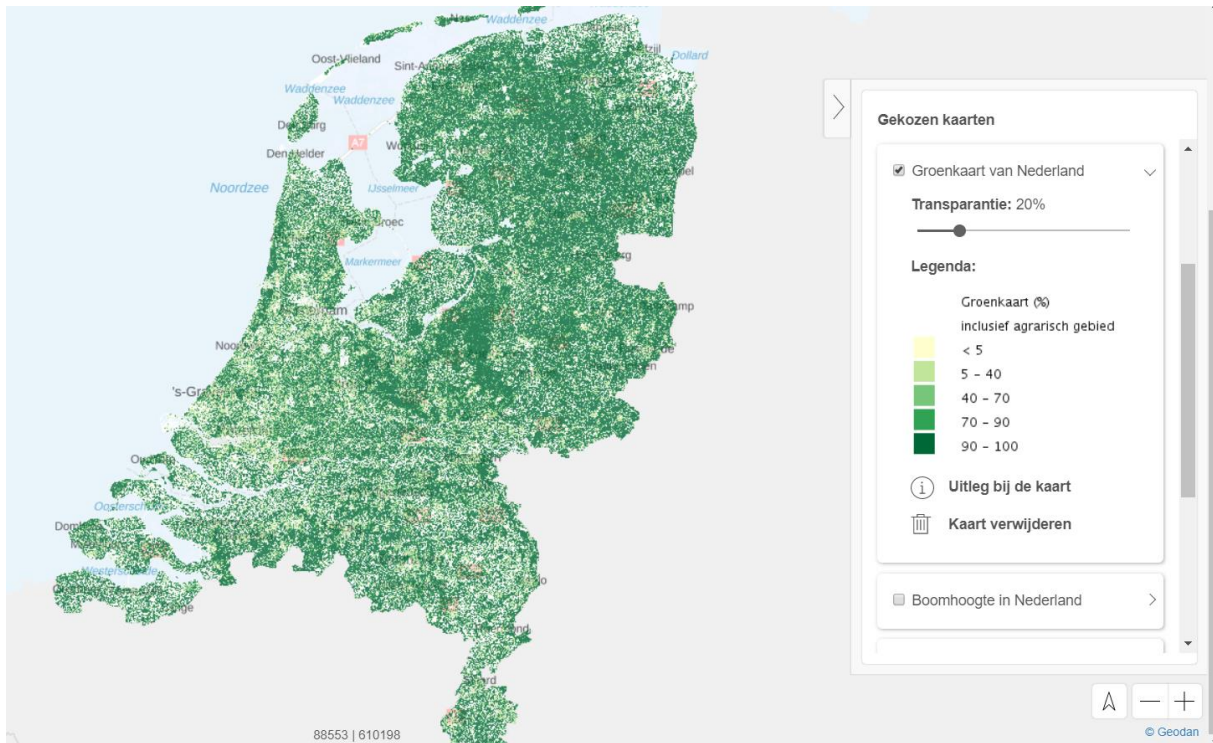
### Variables

The grid dataset contains the coverage (%) of green per 10x10 meter grid cell.

### Data source

The data is produced by the Institute for Public Health and Environment (“Rijksinstituut voor Volksgezondheid en Milieu”, RIVM) and can be downloaded via the online Atlas Leefomgeving: <https://www.atlasleefomgeving.nl/kaarten>.

**Map example:** percentage of green per m<sup>2</sup> in the Netherlands (with zoom around Amsterdam)



**Contact information**

Atlas Leefomgeving

Metadata date:  
28 February 2020

spatial data acquisition and processing  
Carolina Marghidan

Rijksinstituut voor Volksgezondheid en Milieu (RIVM)

E-mail: [atlasnatuurlijkkapitaal@rivm.nl](mailto:atlasnatuurlijkkapitaal@rivm.nl)

### **Terms and conditions**

No usage restrictions

### **List of references**

Atlas Natuurlijk Kapitaal (ANK), <http://www.atlasnatuurlijkkapitaal.nl>

<https://www.atlasleefomgeving.nl/struiken-in-nederland>

<http://nationaalgeoregister.nl/geonetwork/srv/dut/catalog.search#/metadata/652b46d7-cad5-47ab-9e27-2293956a9925?tab=relations>