

LOW VEGETATION IN THE NETHERLANDS

Spatial scale / resolution:	10 x 10 meters
Spatial coverage:	Netherlands
Temporal range:	2017 (publication date)
Data source input data:	https://www.atlasleefomgeving.nl/kaarten
Data format input data:	ASCII (*.asc)
Data format output data:	GeoTiff (*.tif)
Data storage output data:	..\Source_data\Greenspace
Files:	ANK_086_20170314_gm_Graskaart_met_landbouw.asc ANK_086_20170314_gm_graskaart_zonder_landbouw_v2.asc

Data description

The “Lage vegetatie in Nederland buiten het landbouwgebied” dataset shows all low vegetation (such as grasslands), below 1 meter and excluding agrarian areas in the Netherlands in a grid map. This data is offered by the Institute for Public Health and Environment (Rijksinstituut voor Volksgezondheid en Milieu, RIVM). The low vegetation is presented in a raster map with a resolution of 10 x 10 meter. The vegetation is expressed as percentage green per grid cell. This dataset is derived from the AHN2 and AHN3 files (“Actueel Hoogtebestand Nederland”, resolution of 0.5 m), the BAG buildings (“Basisregistratie Adressen en Gebouwen”) and the Infrared aerial photo (CIR file, resolution of 0.25 m). The dataset can be viewed in <https://www.atlasleefomgeving.nl/kaarten> and downloaded as ascii file. The zip file contains a version of the data excluding agrarian areas, and one including agrarian areas.

In addition, RIVM offers a dataset on the location of trees, height of the trees and shrubs in the Netherlands. The map “Groenkaart van Nederland” combines the tree datasets (“Bomen in Nederland”), shrub dataset (“Struiken in Nederland”) and the low vegetation (“Lage vegetatie in Nederland”), and includes vegetation in agrarian areas. This map can be viewed in <https://www.atlasleefomgeving.nl/kaarten>.

For more information visit: <https://www.atlasleefomgeving.nl/en/explore/nature/green-living-environment>

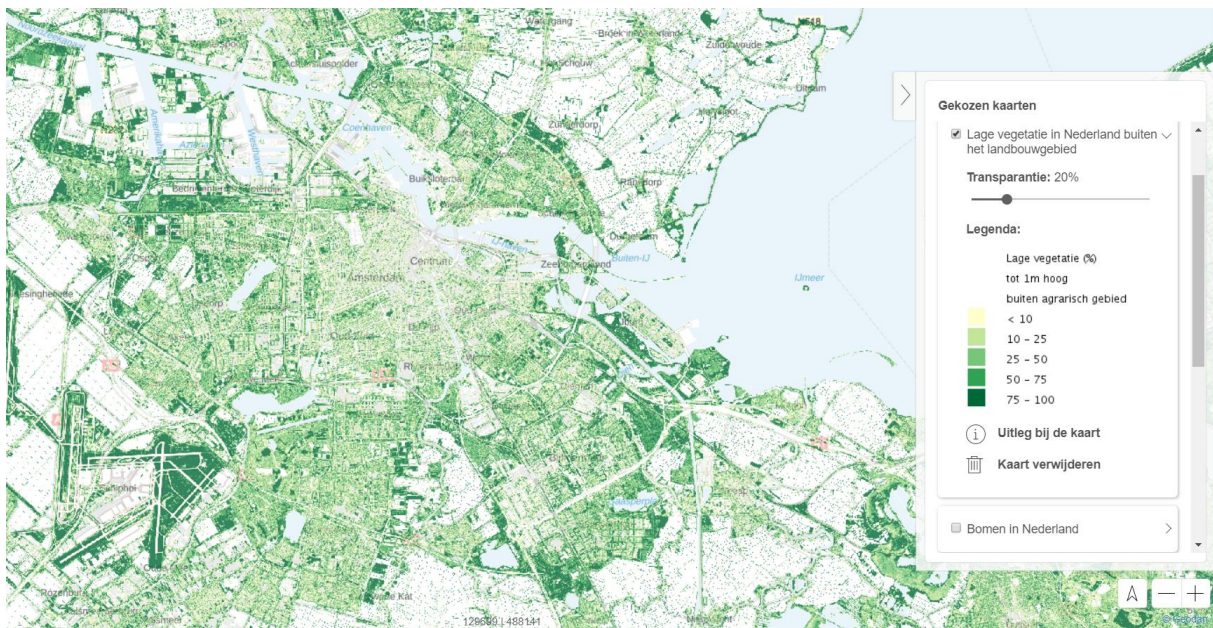
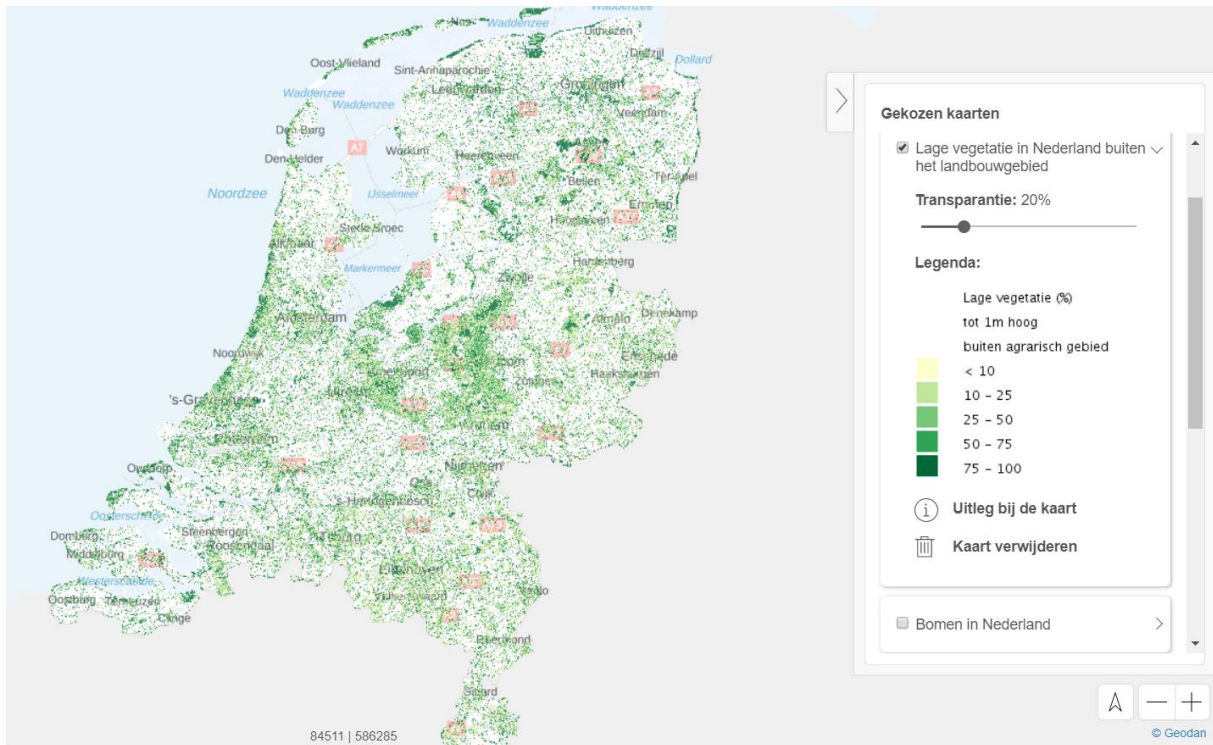
Variables

The grid dataset contains the coverage (%) of low vegetation (< 1 m) per 10x10 meter grid cell.

Data source

The data is produced by the Institute for Public Health and Environment (“Rijksinstituut voor Volksgezondheid en Milieu”, RIVM) and can be downloaded via the online Atlas Leefomgeving: <https://www.atlasleefomgeving.nl/kaarten>.

Map example: percentage of low vegetation per m² in the Netherlands (with zoom around Amsterdam)



Contact information

Atlas Leefomgeving

Rijksinstituut voor Volksgezondheid en Milieu (RIVM)

E-mail: atlasnatuurlijkkapitaal@rivm.nl

Terms and conditions

Metadata date:
28 February 2020

spatial data acquisition and processing
Carolina Marghidan

No usage restrictions

List of references

Atlas Natuurlijk Kapitaal (ANK), <http://www.atlasnatuurlijkkapitaal.nl>

<https://www.atlasleefomgeving.nl/struiken-in-nederland>

<http://nationaalgeoregister.nl/geonetwork/srv/dut/catalog.search#/metadata/652b46d7-cad5-47ab-9e27-2293956a9925?tab=relations>