

## Public transport stops 2018

**Spatial scale / resolution:** PC6 Address / point coordinates

**Spatial coverage:** Netherlands

**Temporal range:** 2018

**Data format input data:** Points / Feature Service Feature Class

**Data format output data:** Points / ESRI File Geodatabase (FileGDB)

**Data source input data:** AGOL feature service:

<https://geo.rug.nl/arcgis/rest/services/VerkeerInfra/PublicTransportStopsNetherlands/FeatureService/0>

### Data storage outputdata:

C:\Work\GIS\_data\_and\_projects\Netherlands\Public Transport\OV-haltes-NL.shp

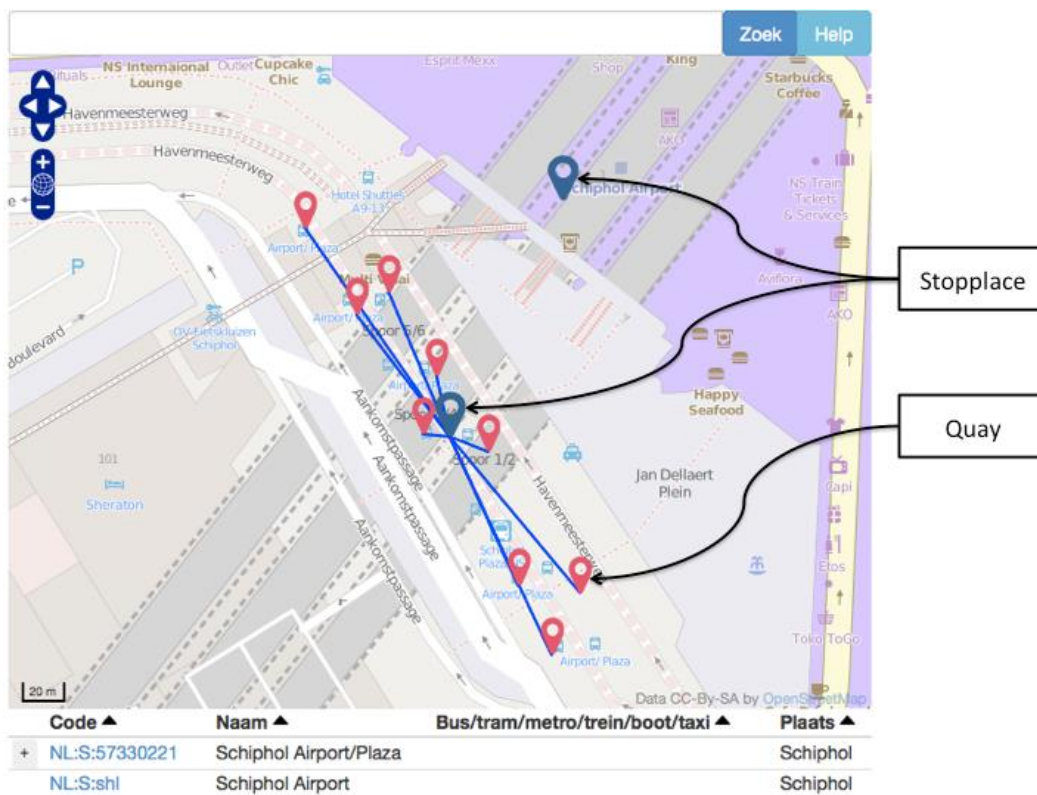
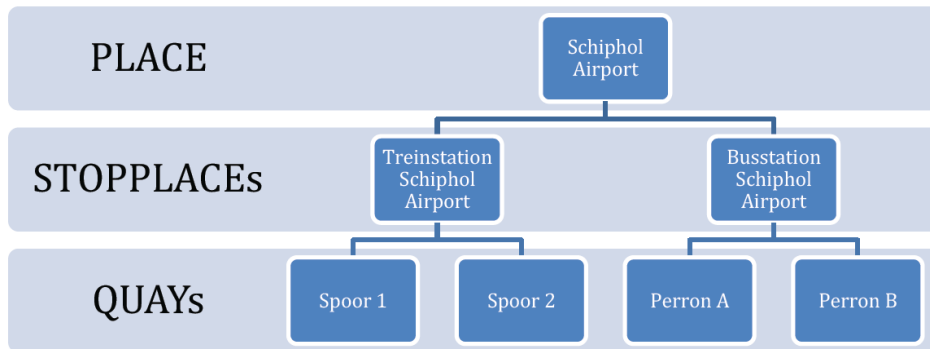
### Data description:

This dataset contains all the public transport stops in the Netherlands in March 2018, divided by mode of Transport (Column 'hoofdmodal'):

- Bus
- Ferry
- Metro
- Taxi
- Tram

The data is organized in places, stopplaces and quays and every public transport stop in the dataset has an unique national number (NL:Q:xxxxxxx). Quays are the individual stop locations from which passengers have access to the public transport network. A stop place is a cluster of nearby quays having all the same stopplace name. A place is an overarching network node with several stopplaces such as Schiphol Airport. Although stopplaces and places are indicated separately in the online mapservice by DOVA (<https://chb.ndovbeheer.nl>), they are not available as separate locations in the GIS dataset. However, quays belonging to the same stopplace can be identified and selected on the basis of the attribute field 'stopplacec' in which quays belonging to the same stopplace have the

same stopplace code. For further details on this dataset we refer to the user manual that is provided with the mapservice.



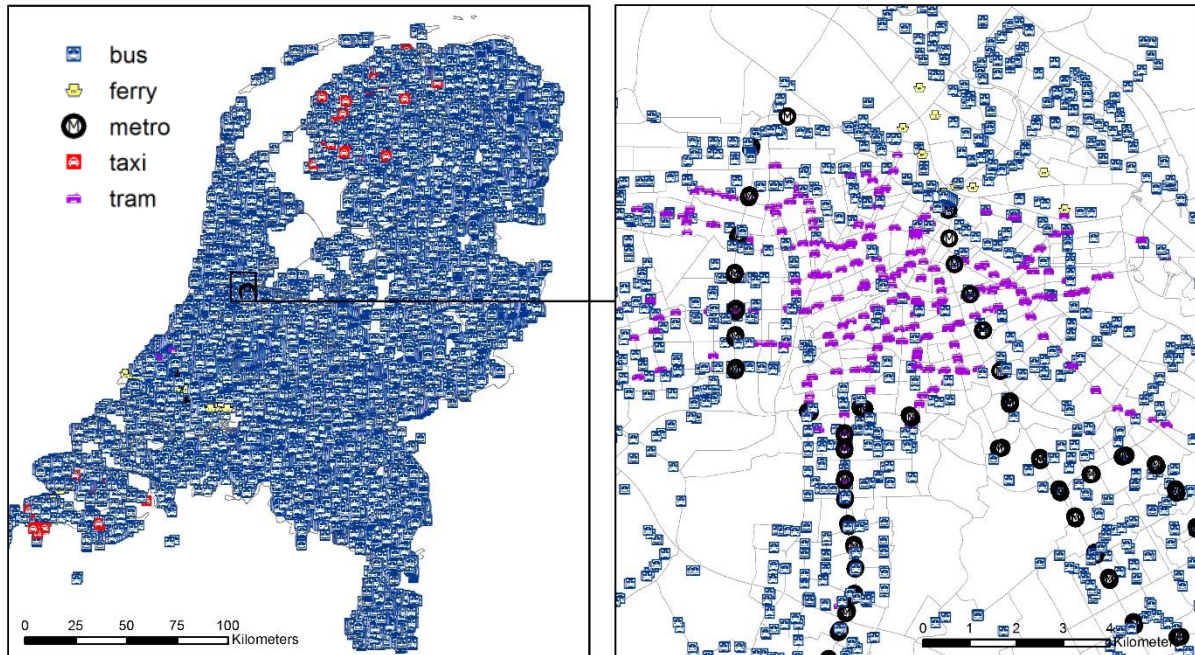
Note that this dataset also contains records for expired or planned public transport stops. These stops should be removed from the dataset prior to any further analysis if these stops are not relevant for the intended purpose.

### Data processing:

The source data can be accessed directly in ArcGIS via an ArcGIS online (AGOL) feature service. Alternatively it can be accessed by adding the geo-services of the Geodienst from the University of Groningen as an ArcGIS server in ArcCatalog: <https://geo.rug.nl/arcgis/services>. Next, the public transport data is available in the datafolder: VerkeerInfra/PublicTransportStopsNetherlands. The data displayed via this online service can be downloaded locally by exporting it.

## Map example Public transport stops 2018

..\Geodata\Source\_data\Traffic\OV\Metadatasheet map overview OV stops\_ArcMap10\_6



## Variables

Table 1 provides an overview of variables that are available in this dataset.

**Table 1: Overview of attribute data in dataset Public transport stops 2018 (OV-haltes-NI)**

Variable name	Description	Original dataset
FID	Internal table id	
id	Identification number	
dataownerc	Dataowner code	
quaycode	Uniqe quay code	
haltenumme	Unique transport stop code (0.0000000 if expired!)	
duplicaath		
haltebordn		
haltenaam	Name of the transport stop	
perronaand	Platform designation	
woonplaats	Place name	
gemeenteco	Municipality code	
gemeentena	Municipality name	
wegbeheerd	Code road manager	

wegbehee_1	Name road manager
wegbehee_2	
straat	Street address
locatieoms	Transport connections (numbers and destinations); can be out of date
lijnen_en	
hoofdmodal	Main transport modality
stopplacec	Stop place code
tweede_mod	
stopplac_1	
rd_x	X-coordinate in Dutch coordinate system (RD)
rd_y	Y-coordinate in Dutch coordinate system (RD)
windroosri	Compass driving direction
status	Status transport stop (available/expired/planned)
type_halte	Type of stop (regular/temporary/calamity)
huidige_va	Mutation date?
aanpassing	
aanpassi_1	
perrontype	Platform type (langshalte/haltehaven)
diepte_hal	Depth of platform (if present)
halteerlen	Length over which the transport vehicle can stop
lengte_hal	Platform length
halteerl_1	
perronhoog	Platform height
perronbree	Difference with diepte_hal?
perronbr_1	
lengte_ver	
minimale_b	
hellingbaa	Presence ramp (Y/N)
lengte_hel	Ramp length
breedte_aa	
hoogtevers	
markering	
geleidelij	
geleidel_1	
aansluitin	
instapmark	
instapma_1	
haltebord	Transport stop sign
niveau	
lift_aanwe	Presence elevator (Y/N)
afvalbak_a	Presence garbage bin (Y/N)

halte_verl	Presence lightning (Y/N)
abri_aanwe	Presence shelter (Y/N)
informatie	Presence information (Y/N)
reclame_in	Presence advertisement (Y/N)
zitgelegen	Presence seating (Y/N)
fietsparke	Presence bicycle parking (Y/N)
aantal_fie	Number of bicycle parking spots
ov_chipkaa	Presence OV_chip charging station (Y/N)
ov_chipk_1	
aanwezighe	
lijnnenetk	Presence transport network map (Y/N)
dris_aanwe	
dris_audio	
aantal_reg	
haltefotor	Photograph of transport stop (Y/N)
opnamedatu	Registration date
opmerkinge	Remarks
perron_toe	
stasteun	Presence standing support seat (Y/N)
haltenum_1	
wegnummer	Road number
hectometer	Hectometer sign
fictieve_h	
groene_hal	
type_hal_1	
verhoogd_f	
soort_obst	Type of obstacle
rechtstand	
toegankeli	Accessibility
aanpassi_2	
aanpassi_3	
aanpassi_4	
aanpassi_5	
aanpassi_6	

## Data provider

The data is provided by the Geodienst Groningen University and is based on the processing and integration of data from the 'databank Nationale Data Openbaar Vervoer' (NDOV:

<https://ndovloket.nl>). The Geodienst does not provide a description of the data processing steps but validity and completeness of the data can be checked by comparing to the online data service from DOVA: <https://chb.ndovbeheer.nl>

The original data is made available by the 'databank Nationale Data Openbaar Vervoer (NDOV)' based on a royal decree from 2011 (Besluit Toegankelijk Openbaar Vervoer (TOV)) and a consecutive national law in 2012 (Wet gelijke behandeling op grond van handicap of chronische ziekte (Wgbh/cz)) that obliges managers, administrators or grantors of public transport stops to provide information from 1 January 2015 onwards about the accessibility of public transport services for people with a disability. To this end a partnership (DOVA) between the responsible parties was established to deliver actual and uniform data via the 'NDOV loketten' about the public transport stops.

#### **Data quality**

Data quality aspects are described in the user manual of the map service.

#### **Additional information**

Map service Centraal Halte Bestand <https://chb.ndovbeheer.nl/>. A user manual is available via the help button, or directly at the following URL:

<https://chb.ndovbeheer.nl/files/20190807%20Gebruikershandleiding%20Beheertool%20CHB%20v1.11.pdf>

#### **Contact information**

Johan Bergsma, e-mail: [geodienst@rug.nl](mailto:geodienst@rug.nl)

Geodienst, Research and Innovation Support

Centre for information Technology

University of Groningen

[rug.nl/geo](http://rug.nl/geo)

#### **Terms and conditions**

Credits for the use of this dataset should be given to: Geodienst University of Groningen, NDOV. Further, no terms and conditions have been provided.

### **Suggested or required way of data referencing**

No indications for referencing have been provided.

### **List of references**

Boerma, S., Boor, J., Kooijman, W. (2018). Beheertool Centraal Halte Bestand, gebruikershandleiding, versie 1.11. DOVA.

<https://chb.ndovbeheer.nl/files/20190807%20Gebruikershandleiding%20Beheertool%20CHB%20v1.11.pdf>